

# FRIDAY FLASH

Eden Hall Upper Elementary School

September 29, 2023

## In This Issue

- Exploring Guitar Club
- Zroni Roll Fundraiser
- Register for Trunk or Treat
- Save the Date for Picture Day
- Dyslexia Simulation Event

## Quick Links

- [Eden Hall Upper Elementary](#)
- [Calendar of Events](#)
- [Breakfast and Lunch Menu](#)
- [Cafeteria Account](#)
- [Eden Hall PTO](#)

## Exploring Guitar Club

The Eden Hall Exploring Guitar Club will start **today** for 5th grade, **Wednesday, October 4**, for 6th grade, and **Thursday, October 5**, for 4th grade. Parents of registered students will receive emails with details. Please contact Mr. Rickenback with any questions.



## Zroni Roll Fundraiser

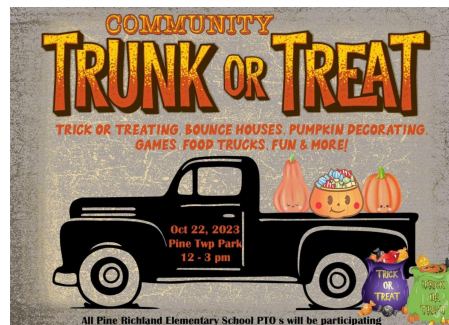
All Zroni Rolls are handmade and flash frozen and will be delivered frozen and ready to bake. One feeds three to four people for only \$16. Order by **Thursday, October 5**. Pick up **Friday, October 20**, from 2:45 pm - 3:45 pm, or have them sent home with your student.



[Read More](#)

## Register for Trunk or Treat

The communities of Pine and Richland, all of the Pine-Richland elementary school PTOs, local first responders and more are coming together for a single community wide Trunk or Treat event on **Sunday, October 22**, from 12:00 pm – 3:00 pm at Pine Community Park! Register by **October 18**. The EHUE PTO will have a booth with games and treats and spirit items for sale (cash or credit)!



[Read More](#)

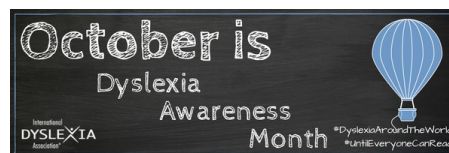
## Save the Date for Picture Day

Picture Day is scheduled for **Tuesday, October 24**. Mark your calendars and stay tuned for more information!



## Dyslexia Simulation Event

Dyslexia is a learning impairment that causes problems with reading, writing and spelling. In order to help facilitate more awareness and understanding about this learning difficulty, Pine-Richland School District is offering a dyslexia simulation event on **Wednesday, October 25**, at Eden Hall, hosted by the International Dyslexia Association of Pennsylvania.



[Read More](#)

## In Case You Missed It

### Student Art Contest

Students, help decorate Eden Hall's conference room! Draw a picture of your favorite biome (forest, aquatics, desert, grasslands or tundra). Submit drawings to the main office and be sure to include your name and homeroom teacher on the back. Entries due **September 29**.



[Read More](#)

## Physical Exam Forms Due for 6th Grade

Physical exams are **required for 6th grade students** and are due **October 1**. The completed physical exam must be dated after September 1, 2022. Please provide an updated record via email, fax, or mail to the [school health office](#). You may use the district's [Physical Examination Form](#) or a computer printout of the physical with the doctor's signature. If your student has a sports physical, please send a copy to the nurse when you upload it to Healthy Roster.



## Health Forms Due for Grades 1-12

Annual 2023-2024 Medical Health Update forms for

**grades 1-12** are in the [Sapphire Community Portal](#). Please complete your student's form if you have not already done so.

## 4th Grade Career Café

EHUE counselors are excited to welcome back a Career Café for 4th graders where parents volunteer to present virtually or in person about their job. [If you have any interest in participating, please complete this form](#). We are in the planning phase and more information will be coming in the next few weeks!



## Talent Show Practice Dates

Show off your talents this fall! The 5th/6th grade show is planned for **October 18** and the 4th grade show will be on **October 24**. Practices started **September 27**. Use the button below for more details about the practice and rehearsal schedule.



[Read More](#)

## Sign Up for the 10th Annual Ram Run

Join the Pine-Richland Cross Country Boosters for the 10th annual PR Ram Run 5K and one mile family fun run on **Sunday, October 8**, at North Park. Proceeds benefit the Pine-Richland Cross Country Booster Club as well as the Eden Hall, Hance, Richland and Wexford Elementary School parent-teacher organizations.



[Read More](#)

## The Fall Book Fair is Coming

We're excited to invite you to our upcoming Scholastic Book Fair **October 9-13**. Hosted by our library and PTO, this event is an opportunity for students of all ages to build their home libraries and further their love of reading. See the class shopping schedule, sign up to volunteer and even shop online using the button below.



[Read More](#)

## Save the Date for Movie Night

Movie Night will be held **Thursday, October 12**, from 6:00 - 8:30 pm, presented by the Eden Hall PTO and Armstrong Cable. Students will choose the movie this week!

[Read More](#)



## Spirit Stickers Available

EHUE PTO is selling [Spirit Vinyl Stickers](#) in seven different designs and two different sizes. Orders will be sent home with your student.



## Student Directories Available

EHUE directories are available for [online order](#) to have the directory sent home with your child, or [send this order form](#) to school with a check payable to EHUE PTO.



## After-School Programs

Eden Hall has several after-school programs starting in October, including **Spanish Club, Outside the Box, Izabella's Gourmet Chow, Stormy Oaks Nature Explorers, The Human Machine** and **Crime Scene Investigation**. Find program details, registration costs and deadlines using the button below.

[Read More](#)



## Order Chromebook Cases

Eden Hall PTO is selling Chromebook cases to alleviate minor damage done to the computers. They fit all K-12 Chromebooks and will be delivered directly to the classroom at any school. Delivery in September.

[Read More](#)





## Support the EHUE PTO

Support the EHUE PTO by donating directly. Our no-fuss "Un-Fundraiser" is the only fundraiser where 100% of your donation benefits EHUE students and staff.

[Read More](#)



## Shoe Drive

The Eden Hall Shoe drive us in full force! Bring your old shoes to Eden Hall. Any size—Any kind! EHUE PTO collected over 5,000 pair of shoes last year, raising over \$2,500. Help us again this year! Collection boxes are inside the vestibule at Eden Hall.



## Help Stock the Staff Lounge

Help EHUE PTO stock the staff lounge. Donations can be dropped at the office any time all year or you can order from our [Amazon wish list](#). The EHUE PTO tries to stock the lounge once a month, and with 120 staff, we could use your help!



[Read More](#)

## Reminders

- Friday Flash submissions are due Wednesdays at 8 am to [prnewsletters@pinerichland.org](mailto:prnewsletters@pinerichland.org).
- [Free and Reduced Meal Applications](#) must be submitted each school year.
- [Children's Health Insurance Program](#) information.
- Check the [Friday Flash Archives](#) for past information.



Eden Hall Upper Elementary School | 3900 Bakerstown Road, Gibsonia, PA 15044 Phone: 724-443-1450

[Unsubscribe ehasinger@pinerichland.org](mailto:ehasinger@pinerichland.org)

[Update Profile](#) | [Constant Contact Data Notice](#)

Sent by [prnewsletters@pinerichland.org](mailto:prnewsletters@pinerichland.org) powered by



Try email marketing for free today!